

QTL Analysis using Bayesian Interval Mapping

Samprit Banerjee, Brian S. Yandell, William W. Neely, Nengjun Yi

September 7, 2006

Abstract

Bayesian interval mapping of QTL library R/qtlbim provides Bayesian analysis of multiple quantitative trait loci (QTL) models. This includes posterior estimates of the number and location of QTL, and of their main and epistatic effects. This document assumes some familiarity with QTL and with Bayesian methods. In addition it provides graphical diagnostics that can help investigate several "better" models. It also provides a 1-D and 2-D genome scan. The R/qtlbim package provides plotting facilities for results generated by the analytical tools in the R/qtlbim package. These plotting facilities include time series plots of QTL model characteristics as basic MCMC diagnostic plots, visual tools for comparison of putative QTL models and exploratory plots whose purpose is the aid in the identification of likely QTL. This library R/qtlbim requires R/qtl 1.03.

1 Overview

```
> library(qtlbim)
```

This vignette describes the MCMC sampling routines and some of the plotting facilities available through the R/qtlbim package. The purpose of these plots is to provide graphical tools for

1. exploring putative single and multiple QTL,
2. producing interpretable graphics of the relative evidence in favor of a set of putative QTL,
3. visual diagnostics of the MCMC model selection algorithm.

This package is currently in "beta" release. That is, most of the basic features are stable, but we expect a learning curve. We would like feedback from experienced QTL mappers and R users especially. Please note that the command `qb.mcmc` that creates the MCMC samples produces external files in an output directory. These files are tens of Mb large. They are integral to R/qtlbim diagnostics. The proper way to remove a `qb` object created by `qb.mcmc` is to use the `qb.remove` routine, as indicated below.

This document tries to walk you through the R/qtlbim package by demonstrating the following major functions.

2 Data Simulation

R/qtlbim has an inbuilt function `qb.sim.cross` to simulate a backcross or F2 data set of class `cross` (see R/qtl help pages for details). The following chunk of code generates a data set of 100 individuals of F2 mating design. These individuals are genotyped for 11 not equally spaced markers on 20 chromosomes. There are 7 QTLs, two on chromosome 1 and one each on chromosomes 3,5,7,10 and 19. QTL numbers 1,3 and 4 have additive main effects of 0.5, -0.5 and 0.5 and numbers 2 and 4 have dominant main effects of 0.5 and -0.5. QTL numbers 4 and 5 have an additive-additive interaction of -0.7 and numbers 6 and 7 have an additive-dominant interaction of 1.2. Two covariates, a binary fixed covariate and an ordinal random are generated with their corresponding coefficients as 0.5 and 0.07. G x E (gene x environment) interaction is also considered with the fixed covariate. A normal phenotype and an ordinal phenotype with 3 categories are measured. 7% of the genotypes are randomly missing.

```
> cross <- qb.sim.cross(len = rep(100, 20), n.mar = 11,
+   eq.spacing = F, n.ind = 100, type = "f2",
+   ordinal = c(0.3, 0.3, 0.2, 0.2), missing.geno = 0.03,
+   missing.pheno = 0.07, qtl.pos = rbind(c(1,
```

```
+      15), c(1, 45), c(3, 12), c(5, 15), c(7,
+      15), c(10, 15), c(12, 35), c(19, 15)),
+      qtl.main = rbind(c(1, 0.5, 0), c(2, 0, 0.7),
+      c(3, -0.5, 0), c(4, 0.5, -0.5)), qtl.epis = rbind(c(4,
+      5, -0.7, 0, 0, 0), c(6, 8, 0, 1.2, 0,
+      0)), covariate = c(0.5, 0.07), gbye = rbind(c(7,
+      0.8, 0)))
```

By using the function `qb.sim.cross` a list is attached to cross object named "qtl". This list is typically not a part of the `cross` object as described in `read.cross` of the R/qtl library and is generated only with the `qb.sim.cross()` function.

```
> names(cross)
```

```
[1] "geno" "pheno" "qtl"
```

The `cross$qtl` contains information about the true values which can be compared to after the analysis.

```
> summary(cross$qtl)
```

```
$pos
```

	chr	pos
qtl.1	1	15
qtl.2	1	45
qtl.3	3	12
qtl.4	5	15
qtl.5	7	15
qtl.6	10	15
qtl.7	12	35
qtl.8	19	15

```
$herit.main
```

	qtl	add	dom
main.1	1	0.0566035	0.00000000
main.2	2	0.0000000	0.05547143
main.3	3	0.0566035	0.00000000
main.4	4	0.0566035	0.02830175

```
$herit.epis
```

	qtl.a	qtl.b	aa	ad	da	dd
epis.1	4	5	0.05547143	0.00000000	0	0
epis.2	6	8	0.00000000	0.08150904	0	0

```
$herit.cov
```

	fix.cov	ran.cov
	0.02830175	0.03169796

```
$herit.gbye
```

	qtl	add	dom
GxE.1	7	0.03622624	0

The summary of the cross object summary is shown below.

```
> summary(cross)
```

```
F2 intercross
```

```
No. individuals: 100
```

```
No. phenotypes: 4
```

```
Percent phenotyped: 89 89 94 90
```

```

No. chromosomes:    20
Autosomes:         1 2 3 4 5 6 7 8 9 10 11 12 13 14 15 16 17 18 19 20

Total markers:     220
No. markers:       11 11 11 11 11 11 11 11 11 11 11 11 11 11 11 11 11 11 11 11
Percent genotyped: 97
Genotypes (%):     AA:25.1 AB:49.4 BB:25.5 not BB:0 not AA:0

```

3 Bayesian QTL Mapping

This section describes how to create Markov chain Monte Carlo (MCMC) samples from the Bayesian posterior to be used for QTL mapping.

The function `qb.genoprob` creates a grid of putative QTL positions throughout the entire genome and compute the genotypic probabilities of the same. It would also compute genotypic probabilities for missing markers. In general, the genotypes at different loci are unobserved except at completely informative markers but the probability distribution can be inferred from the observed marker data using the multipoint method (JIANG and ZENG 1997).

```

> cross <- qb.genoprob(cross, map.func = "Haldane",
+   step = 5)

```

In the simplest case, where defaults in the next subsections are used, MCMC samples are created with the following call:

```

qbSim <- qb.mcmc(cross, pheno.col = 1)

```

Named arguments to `qb.data` and `qb.model`, described in the next two subsections, can be passed through `qb.mcmc`. Otherwise, default values are used. The next subsections detail the `qb.data`, `qb.model` and `qb.mcmc` routines.

3.1 Specifying data

The function `qb.data` specifies the traits to be analyzed, their underlying distribution, the random and/or fixed covariates and whether to standardize or to use a boxcox transformation. Note that, the cross object can have several phenotypes and some of which could be used as covariates.

```

> qbData <- qb.data(cross, pheno.col = 3, trait = "normal",
+   rancov = 2, fixcov = 1, boxcox = F, standardize = F)

```

3.2 Defining the model

The function `qb.model` defines the model which is a Cockerham epistatic model. For mapping a $K+1$ genotypes per loci, there are K main effects and K^2 epistatic effects. For a backcross population with two segregating genotypes $b_q b_q$ and $B_q b_q$ at locus q the coefficients are

$$x_{iq1} = z_{iq} - 0.5 \text{ and } x_{iqq'1} = x_{iq1} x_{iq'1}$$

where z_{iq} denotes the number of b_q alleles. For an intercross derived from two inbred lines, there are three segregating genotypes $b_q b_q$, $b_q B_q$ and $B_q B_q$. The coefficients of the Cockerham model are as follows:

$$x_{iq1} = z_{iq} + 1, x_{iq2} = (1 - x_{iq1})(1 + x_{iq1}) - 0.5 \text{ and } x_{iqq'1} = \begin{cases} x_{iq1} x_{iq'1} & k = 1 \\ x_{iq1} x_{iq'2} & k = 2 \\ x_{iq2} x_{iq'1} & k = 3 \\ x_{iq2} x_{iq'2} & k = 4 \end{cases}$$

It also specifies if epistasis is considered, the expected number of main effect QTLs (`main.qtl`), the prior number of total QTLs on all chromosome which includes QTLs with only epistatic effect, the maximum number of QTLs allowed per chromosome. The maximum number of QTLs allowed per chromosome has a default of $l_0 + 3\sqrt{l_0}$ where l_0 is `main.qtl` in a non-epistatic and `mean.qtl` in an epistatic model. The interval between two flanking QTLs for each chromosome and the fixed covariate(s) interacting with QTLs are also specified. Typically a real data set has several traits which can be considered as covariates. By setting the `max.qtl=0` (the maximum number of QTLs allowed) a traditional Bayesian model selection can be performed. This provides a more relevant and shorter set of covariates.

This set of covariates can then be used to for QTL mapping. For our case, as we have only a couple of covariates, we include both in the model. The `main.qtl` argument of the `qb.model` function refers to the prior number of main effect QTL. This is obtained generally from a previous rudimentary non-Bayesian analysis. For example, `R/qtl` can be used to analyze this data without epistasis and the number of QTLs detected could be used as the prior number of QTLs.

```
> qbModel <- qb.model(cross, epistasis = TRUE, main.qtl = 3,
+   interval = rep(5, nchr(cross)), chr.qtl = rep(2,
+   nchr(cross)), depen = FALSE, prop = c(0.5,
+   0.1, 0.05), intcov = 1)
```

3.3 Running MCMC

The function `qb.mcmc` creates MCMC samples on the data and model specified. The results are saved in a specified directory, default being the current directory ("."). The `genoupdate` parameter of the `qb.mcmc` function should be switched on when there are many missing marker genotypes, as for the `hyper` dataset. For our case, we have only 7% of the marker genotypes missing so we are not updating the genotypes. There are two choices of the MCMC algorithm namely, Metropolis-Hastings algorithm and the Gibbs sampler. The M-H algorithm samples from a proposal density approximating the conditional posterior distributions whereas Gibbs sampler samples directly from the conditional posterior distribution. The M-H algorithm is a lot faster compared to the Gibbs sampler. Here we only produce 5000 samples (`= n.iter * n.thin`) for illustration purposes.

```
> qbSim <- qb.mcmc(cross, data = qbData, model = qbModel,
+   main.qtl = 3, n.iter = 500, n.thin = 10, algorithm = "M-H",
+   genoupdate = F)
```

Bayesian MCMC run in progress. The current saved iterations:

200

400

MCMC sample has been saved to: `./pheno.normal_Sep--7-091711`.

Bayesian MCMC took 0.09 minutes.

3.4 Examining qb Object

The `qbSim` is an object of class `qb` to which we can apply the generic `summary` or `plot` routines. We defer plots to later sections. Here we show only the summary:

```
> summary(qbSim)
```

Bayesian model selection QTL mapping object `qbSim` on cross object `cross`

had 500 iterations recorded at each 10 steps

with 50 burn-in steps.

MCMC runs saved in temporary directory

`./pheno.normal_Sep--7-091711`

(use `qb.remove` to remove).

Trait `pheno.normal (3)` treated as normal .

Fixed covariate: `fix.cov`

Random covariate: `random.cov`

Trait was not standardized.

Epistasis was allowed.

Prior number of QTL: 3 main, 6 total, with 13 maximum.

Minimum distance between QTL:

```
[1] 5 5 5 5 5 5 5 5 5 5 5 5 5 5 5 5 5 5 5 5
```

Maximum number of QTL:

```
[1] 2 2 2 2 2 2 2 2 2 2 2 2 2 2 2 2 2 2 2 2
```

QTL by environment allowed.

Interacting covariates: 1

Diagnostic summaries:

	nqtl	mean	envvar	varadd	vardom	varaa
Min.	1.000	8.763	0.3922	0.000000	0.00000	0.00000

```

1st Qu.  6.000 10.000 0.8162 0.001062 0.00000 0.00000
Median   7.000 10.260 1.0260 0.099040 0.02811 0.00000
Mean     6.962 10.270 1.0580 0.180800 0.09165 0.06135
3rd Qu.  8.000 10.540 1.2560 0.272000 0.13570 0.04869
Max.     12.000 11.320 2.4740 1.302000 0.86400 0.81640

          varad  varda  vardd  envadd  envdom  varenv
Min.      0.0000000 0.00000 0.00000 0.00000 0.00000 -1.68500
1st Qu.   0.0000000 0.00000 0.00000 0.04948 0.00000 -0.29290
Median    0.0004395 0.04709 0.00000 0.16440 0.03526 -0.02481
Mean      0.0911200 0.14850 0.05167 0.22250 0.08726 -0.08002
3rd Qu.   0.1174000 0.24730 0.04019 0.33270 0.13280 0.19870
Max.      0.9230000 1.15000 0.79760 1.21200 0.67290 0.67950

          var
Min.      0.04263
1st Qu.   0.62480
Median    0.89690
Mean      0.93480
3rd Qu.   1.21900
Max.      2.34300

```

Percentages for number of QTL detected:

```

 1  2  3  4  5  6  7  8  9 10 11 12
0  1  3  7 12 17 19 17 15  5  3  1

```

Percentages for number of epistatic pairs detected:

```

pairs
 1  2  3  4  5  6  7
20 28 23 16  9  2  1

```

Percentages for common epistatic pairs:

```

 7.12 11.15  7.9  2.15 12.18  9.18  3.13 10.15  1.9 11.12
 30   12   10   10   5     5     4     4     4
 3.5  2.16  1.19  1.4 16.19
 4     3     3     3     3

```

3.5 Cleaning Up

Often we want to keep a `qb` object around for some time to examine various diagnostics. While we might just use the R command `rm` or `remove` to remove the internal object, it is wise to instead use the R/`qtlbim` command `qb.remove` to remove internal and external files. Recall that `qb.mcmc` creates an external directory with a unique name, containing tens of Mb of MCMC samples. The proper way to remove the object `qbSim` is as follows:

```
> qb.remove(qbSim)
```

It is possible to recover an orphaned external `qb` directory, say if an R session is corrupted or the internal `qb` object is inadvertently removed. See the manual page on `qb.recover` for further information.

4 Hyper Dataset Demo

The remainder of this document focuses on the `hyper` dataset from R/`qtl`. One way to produce a `qb` object is to run the `hyper` demo by typing

```
demo(qb.hyper.tour)
```

at the R prompt. Alternatively a `qb` object can be created by the following sequence of commands.

```
# First load the library
library(qtlbim)
```

```
# Now load the hyper data set.
```

```

data(hyper)

# Select just the columns in the hyper data set corresponding to
# chromosomes one through 19. This means that we have dropped
# the X-chromosome from our analysis.
hyper = subset(hyper, chr=1:19)

# Calculate genotype probabilities.
hyper = qb.genoprob(hyper, step=2)

# Now run the MCMC model selection algorithm. Running this command
# may take as much as 15 minutes on slower computers.
qbHyper = qb.mcmc(hyper, pheno.col = 1, genoupdate=TRUE, seed = 1616)

```

The comments in the code above describe the meaning of each step in the sequence of commands used to produce `qbHyper`. The option `seed` sets the random number seed so that this run can be repeated exactly. The `demo(qb.hyper.tour)` or the `qb.mcmc` command above creates a `qb` object called `qbHyper` that is used throughout this vignette.

Please note that the plotting routines in this package all use the S3 generic method. That is, we create an object with a call to `qb.xxx` and then plot it using the generic `plot` command. Manual pages show the complete set of command and plot options.

5 Plotting MCMC History

The final command above produced the `qbHyper` object by running the MCMC model selection algorithm:

```
qbHyper = qb.mcmc(hyper, pheno.col = 1, genoupdate=TRUE)
```

Consequently a logical first step in exploring the results of the analysis is to examine this MCMC chain. The plotting tools in `R/qtlbim` provide a method for visually inspecting the history of the MCMC run. The command

```
plot(qb.coda(qbHyper))
```

shows a default view of the MCMC chain as a time series. Each iteration of the MCMC chain represents a single model; therefore, we can explore the history of the MCMC chain by plotting time series for relevant model features. The time series plotted by `qb.coda` show the sampling histories for

1. number of QTL in each model (`nqtl`),
2. mean phenotype according to each model (`mean`),
3. environmental variability under each model (`envvar`),
4. variance explained under each model (`var`) and

It is possible to plot a different subset of the model characteristics above, by using the optional argument `variables` in the `qb.coda` function. For example, in order to view just the number of QTL (`nqtl`) and the model means, use the following command. The results of the following command are shown in Figure 1.

```
plot(qb.coda(qbHyper, variables = c("nqtl", "envvar")))
```

6 A Plot of QTL by chromosome

From a biological perspective it may be interesting to view the location of possible QTL along the chromosome. The function `qb.loci` shows a plot of quantitative trait loci for each chromosome. The QTL are from single QTL models appearing as samples in the MCMC chain. In the plot, the actual locations of possible QTL are jittered slightly in order to give a sense of the density of putative QTL in the vicinity of each marker. The code

```
plot(qb.loci(qbHyper))
```

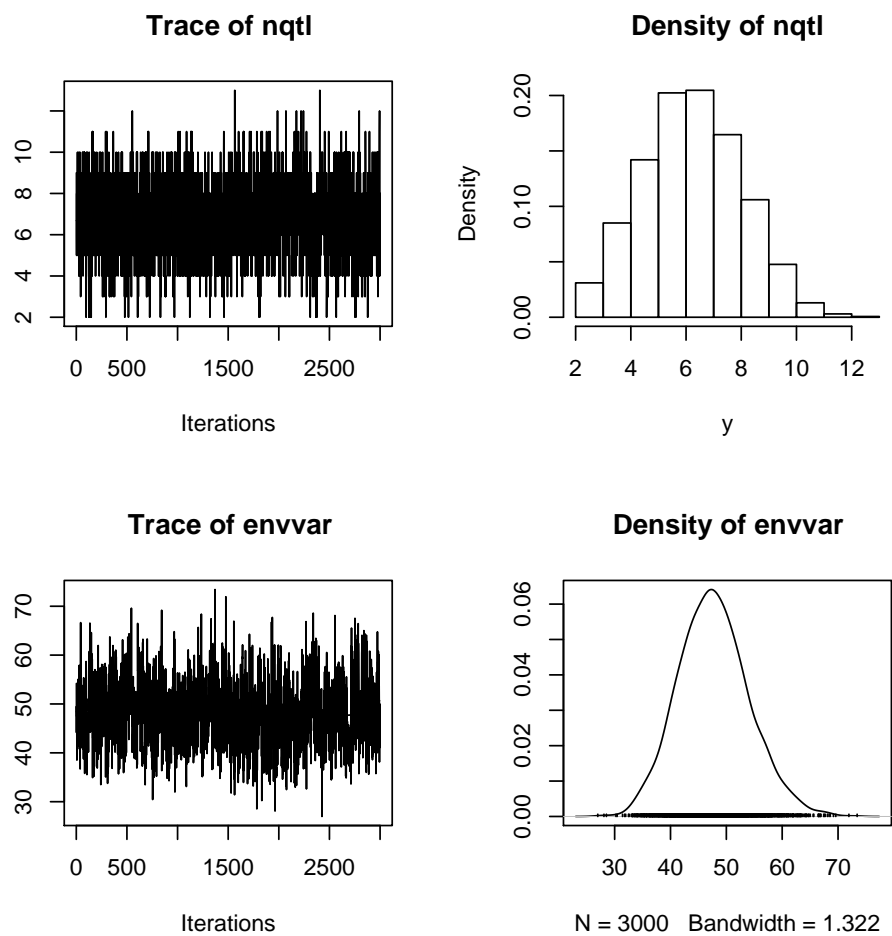


Figure 1: Diagnostic Plot for a MCMC run.

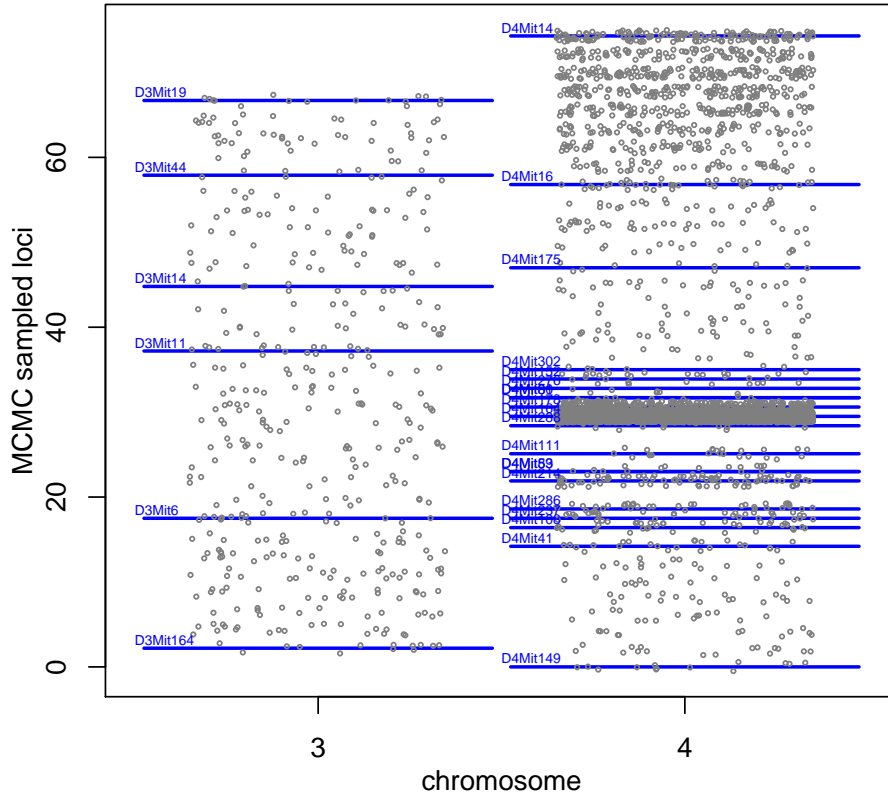


Figure 2: A jittered plot of quantitative trait loci, showing only chromosomes 3 and 4, with locations and marker labels.

will produce a plot with all chromosomes. In order to view a subset of the chromosomes, the parameter `chr` to the generic `subset` routine can be used to limit the plot to a selected set of chromosomes. The horizontal (blue) lines in the plot show the locations of markers. The markers themselves can be labelled by using the parameters `markers` in the function.

```
plot(qb.loci(subset(qbHyper, chr=c(3,4))), labels=TRUE)
```

Figure 2 shows the result of this command.

7 Summary Plots for Sampled Models

The function `qb.BayesFactor` produces a composite (4-by-2) summary plot of the models sampled by the MCMC chain. These plots are useful as an initial tool for examining the evidence in favor of multiple QTL models and in determining the locations of QTL. Figure 3 shows the plot produced by the command `qb.BayesFactor(qbHyper)`. The function of each of these plots is described below.

1. The plot appearing in the upper-left of the figure represents a plot of the prior distribution for the number of QTL involved in models (shown as a broken blue line) against the corresponding posterior probabilities (shown as a histogram).
2. The plot in the upper-right shows Bayes factor ratios. These are the ratios of posterior probabilities to prior probabilities. For pairs of values along the horizontal axis of this plot, the member of the

pair with a larger Bayes factor ratio should be interpreted as more likely. The vertical arrows give an indication of the strength of evidence: weak ($BF = 3$), moderate ($BF = 10$) or strong ($BF = 30$).

3. The second row conveys information in terms of the pattern of chromosomes involved in the models.
4. The third row addresses the frequency of sampling each chromosome.
5. The fourth row show relative importance of epistatic pairs. Here the "6.15", or chr 6 by chr 15, epistatic pair is by far the strongest.

As with other plot functions in the **R/qlbim** package, it is possible to limit attention of a subset of chromosomes using the generic **subset** routine. The **subset** argument **pattern** can be used to limit the models plotted to those involving a specified list of chromosomes. For example the command **qb.BayesFactor(subset(qbHyper,pattern=c(2,3,17)))** considers only those models involving chromosomes 2,3 and 17. Repeats in the pattern sequence indicate multiple QTL on the same chromosome.

8 The Plot Demo

The plot demo (**demo(qb.plot.tour)**) gives a sample of the plots available in the **R/qlbim** package. Running the plot demo requires, the **lattice** package, which is loaded when you attach the **R/qlbim** package. To start the plot demo, use the command

```
demo(qb.plot.tour)
```

The plot demo begins by giving a generic plot for the **qb** object **qbHyper**. The **R/qlbim** generic **qb** plot is analogous to the generic **R** plot for linear model objects. Where the generic plot for a linear model object shows a sequence of graphics whose purpose is to aid in the initial results of model fitting, the generic plot function for **qb** objects shows a sequence of graphics whose purpose is to give an initial assessment of the results produced by the MCMC algorithm. The generic plot for the **qb** object **qbHyper** created above is shown with the command

```
plot(qbHyper)
```

The generic plot function shows a sequence of plots that include time series plots of the mcmc chain, jittered plots of QTL by chromosome and others. The sequence of plots appearing in the plot demo is listed below.

The list of plots shown by the generic plot function.

1. A time series plot of the mcmc chain runs. This is shown in Figure 1, where it was created by the command **plot(qb.coda(qbHyper))**.
2. A jittered plot of QTL by chromosome. This plot is identical to the plot in Figure ?? produced by the command **plot(qb.loci(qbHyper))**.
3. A model selection plot by chromosome. This plot is identical to **plot(qb.BayesFactor(qbHyper))** shown in Figure 3.
4. Plot of QTL posterior for loci plus smooth estimates of QTL effects. This plot is the same as the plot generated by **plot(qb.hpdone(qbHyper))**. Figure 4 shows the result of this command.
5. A plot of epistatic effects if such effects are allowed. Figure 5 shows the result of the command **plot(qb.epistasis(qbHyper))**.
6. Summary diagnostics as histograms and boxplots by number of QTL. This final diagnostic plot can be generated separately by the command **plot(qb.diag(qbHyper))**. Figure 6 shows the result of this command.

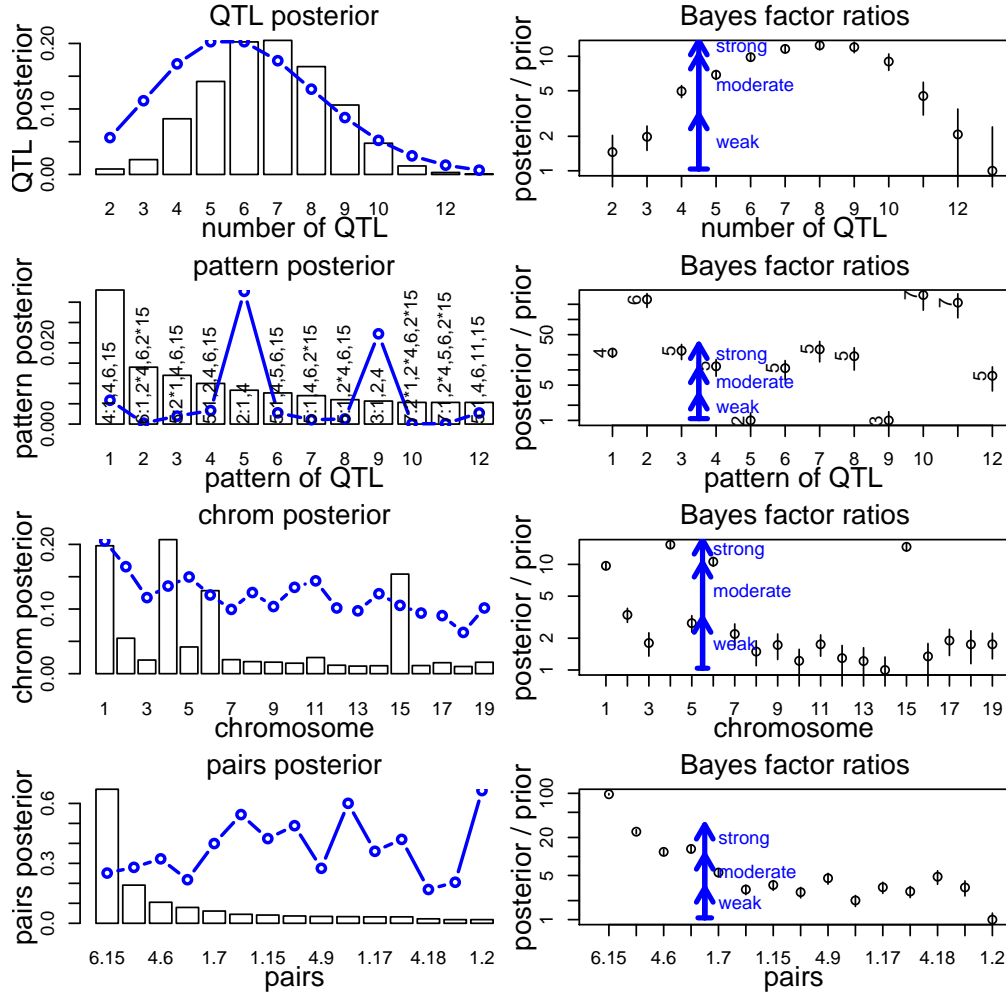


Figure 3: Paired plots of posteriors as bars overlaid by priors as blue lines (left panels) with Bayes factor ratios to the least likely model (right panels). Models in right panel can be compared by vertical separation as scale is geometric. Blue arrows on right panels indicate weak, moderate or strong Bayes factors for ratios of 3, 10 or 30, respectively. Rows convey information about (1) number of QTL, (2) chromosome pattern of QTL, (3) chromosomes, (4) epistatic pairs.

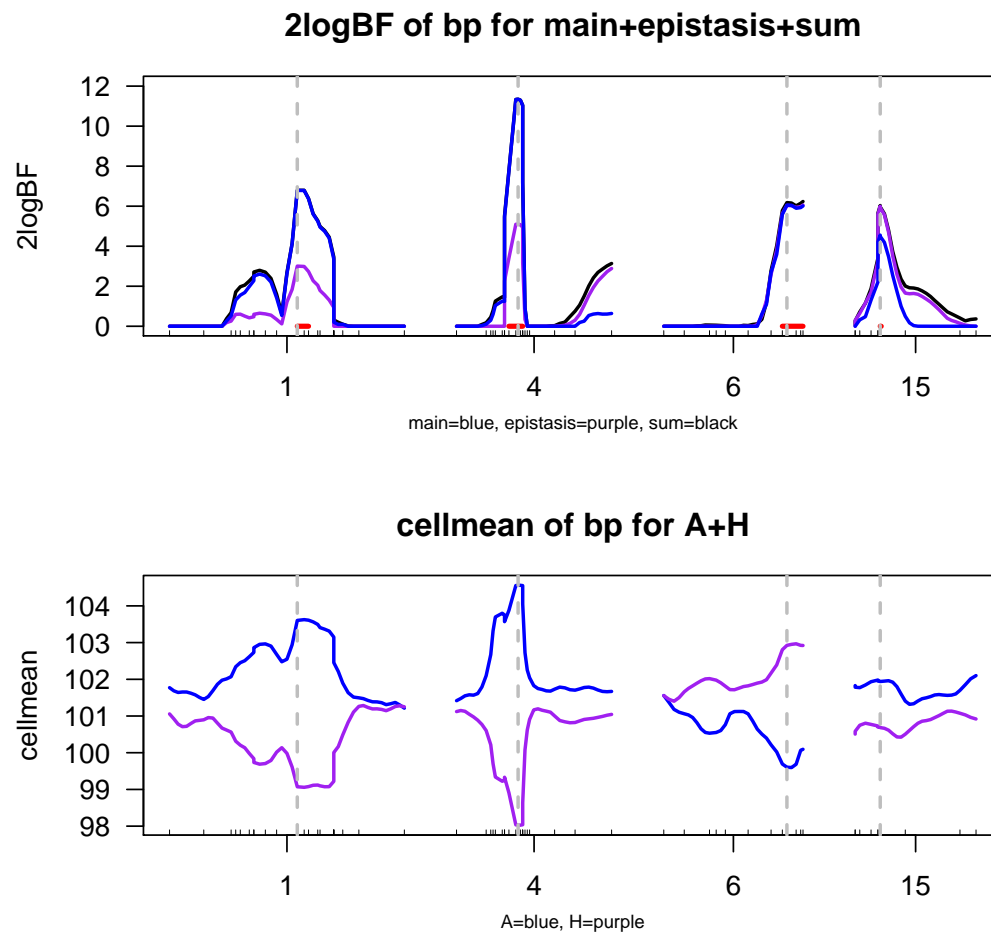


Figure 4: A paired plot of posterior scan for loci above a scan of marginal genotypic means by locus. In upper panel, black is overall posterior, blue is for main effects and purple is for epistasis. In lower panel, blue is for AA, purple for AB, and red for BB genotype at scanned locus.

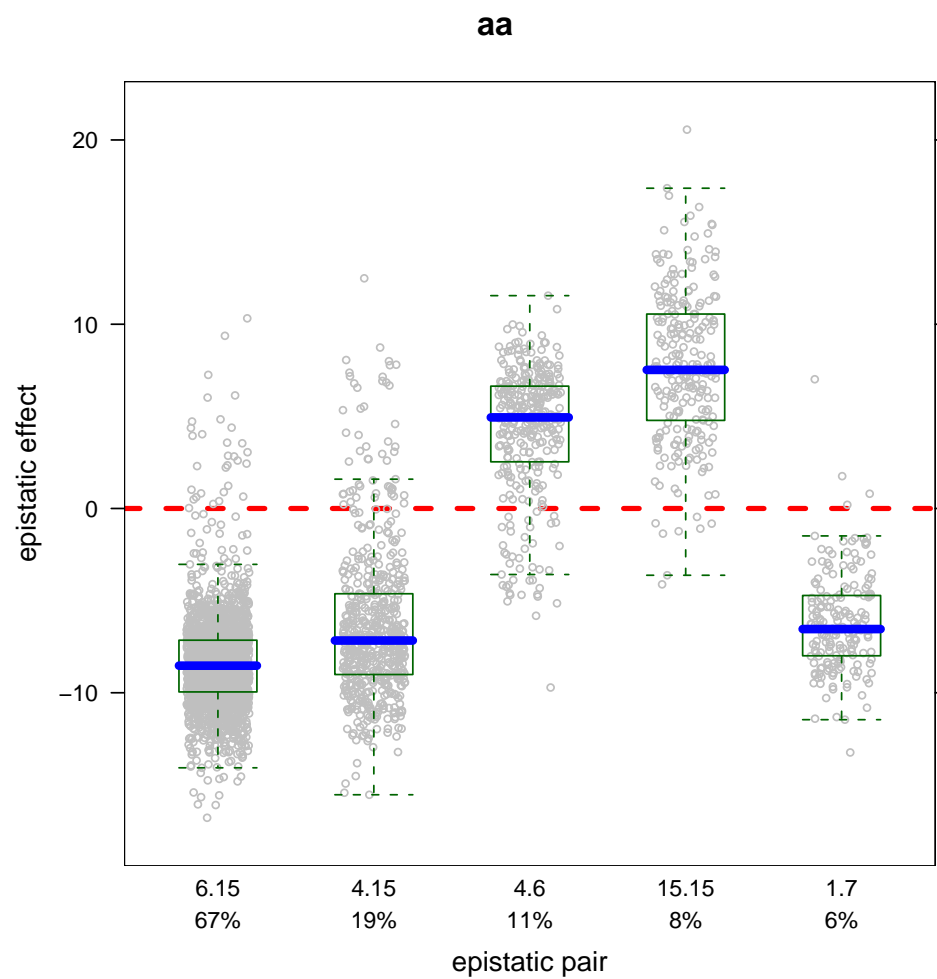


Figure 5: A plot of epistatic effect by pair using Cockerham effects. Only stronger epistatic pairs are shown. Blue line at median; box contains 50% of samples for epistatic pair. Percent below pair indicates percent of MCMC samples with this epistatic pair.

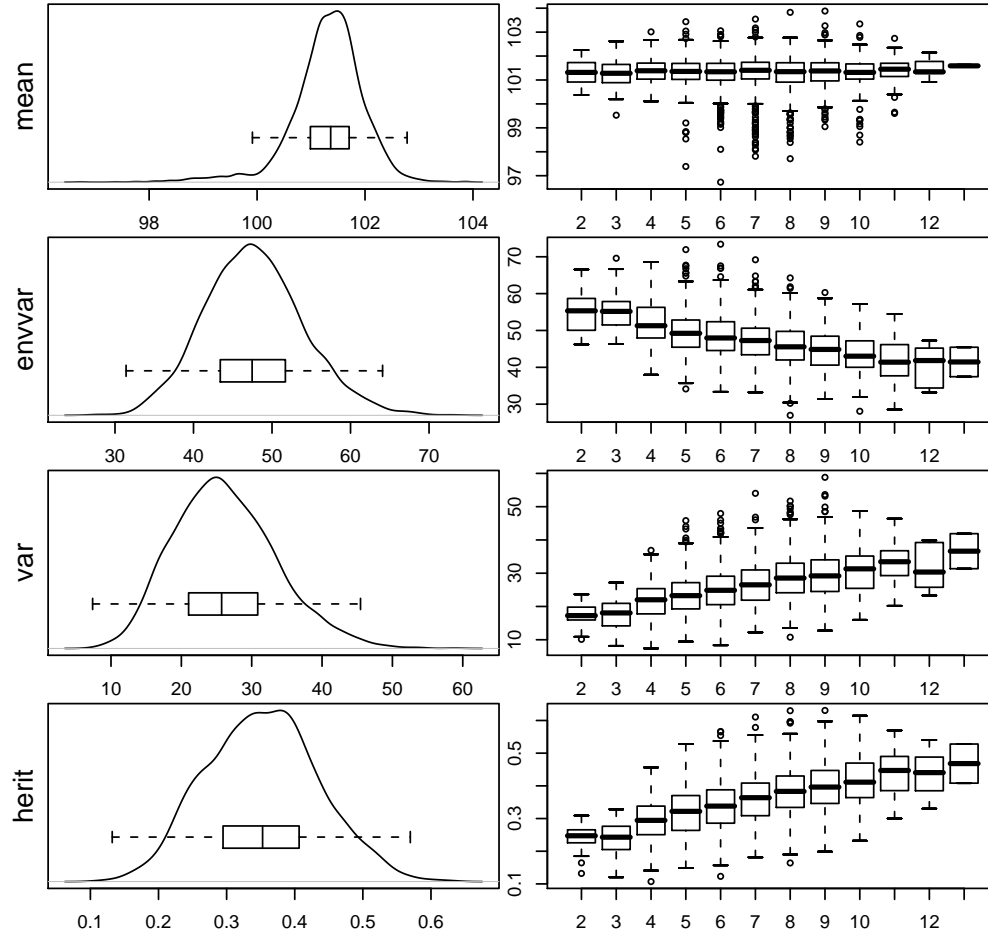


Figure 6: A set of diagnostic plots. Default has mean, unexplained variance ("envvar"), explained variance ("var"), and heritability ("herit"). Left panels show density plot and horizontal box plot for all samples. Right panels show box plots by number of QTL.