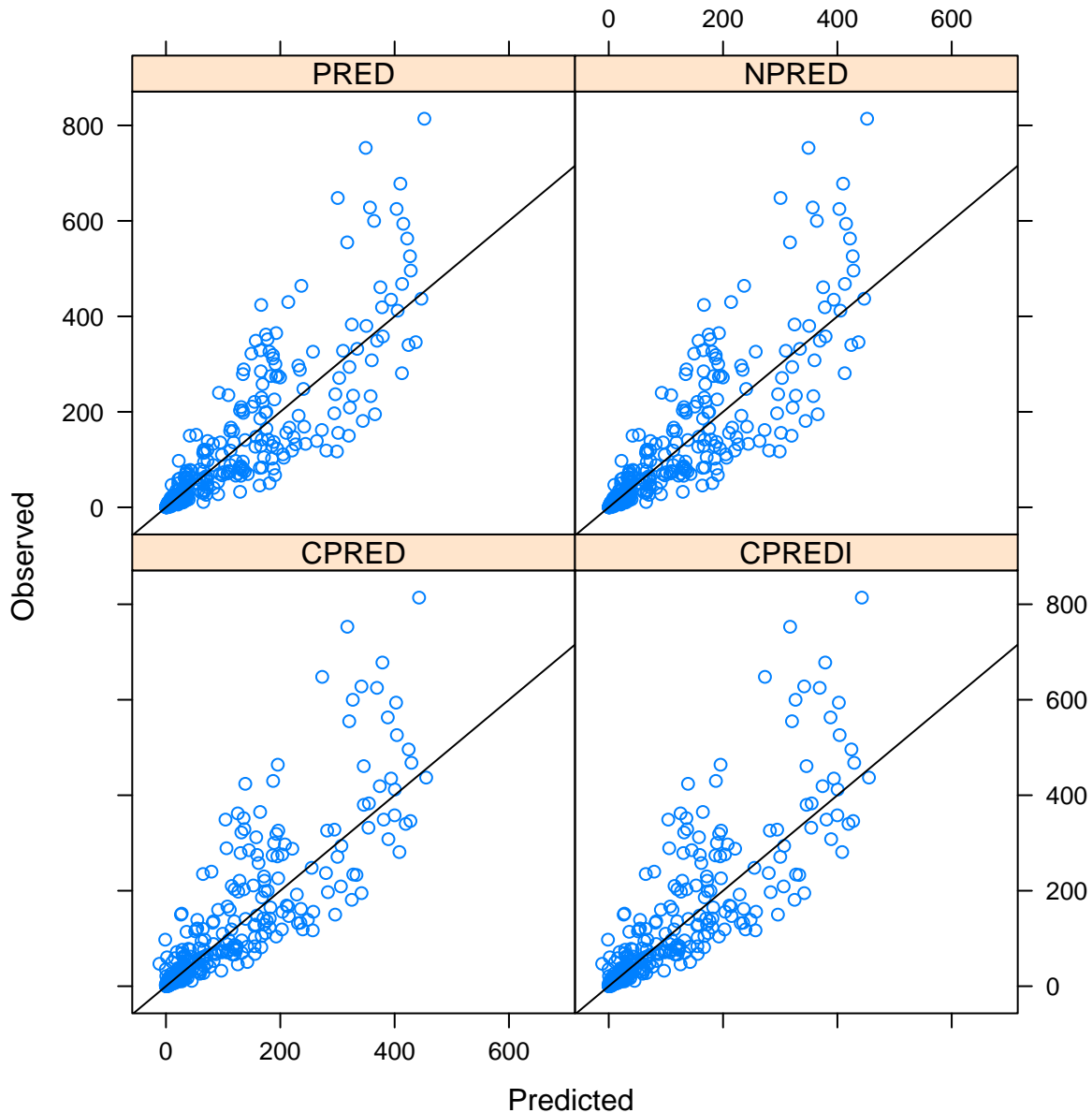


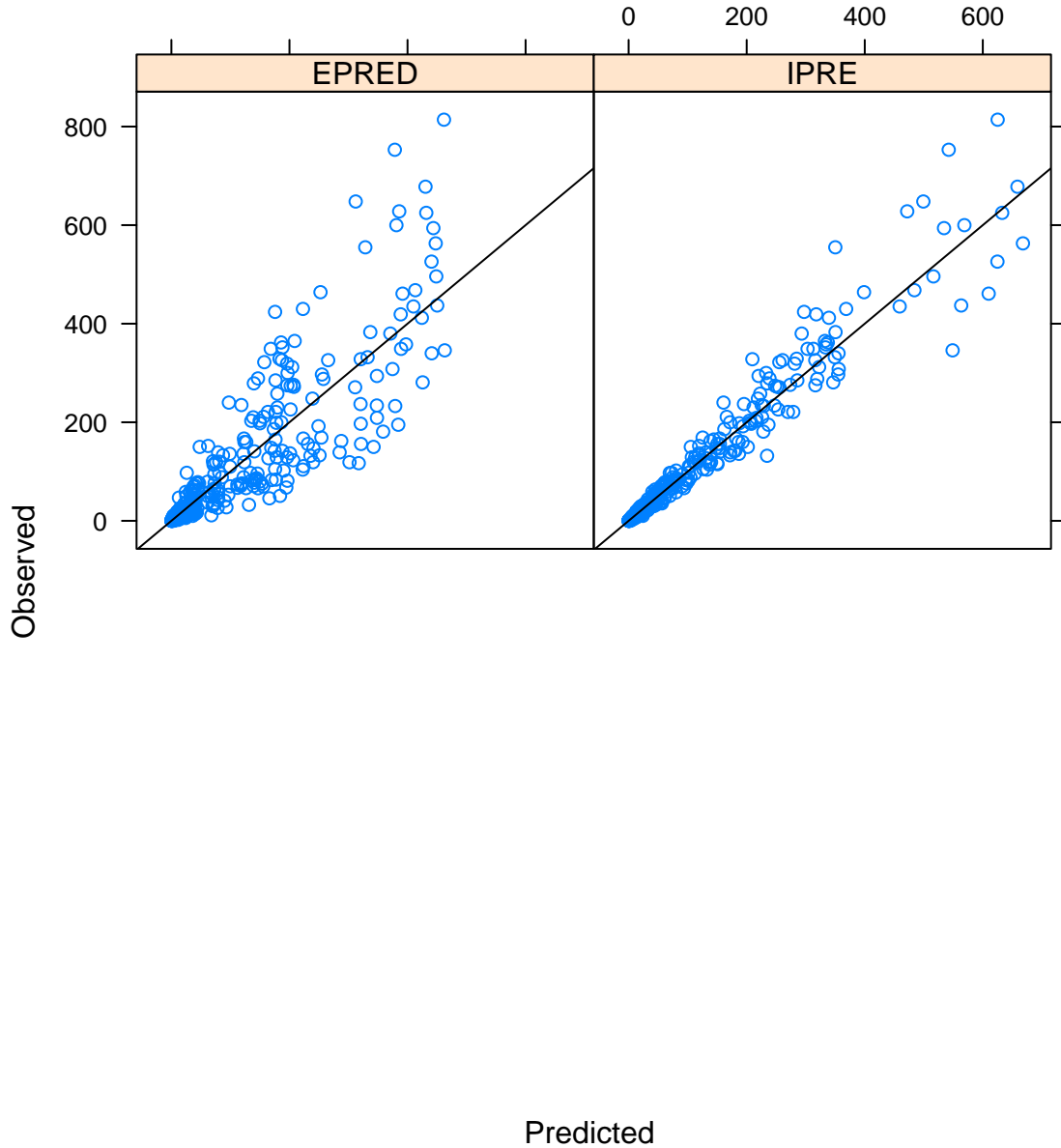
# Model 1006

## Observed vs. Predicted for all data



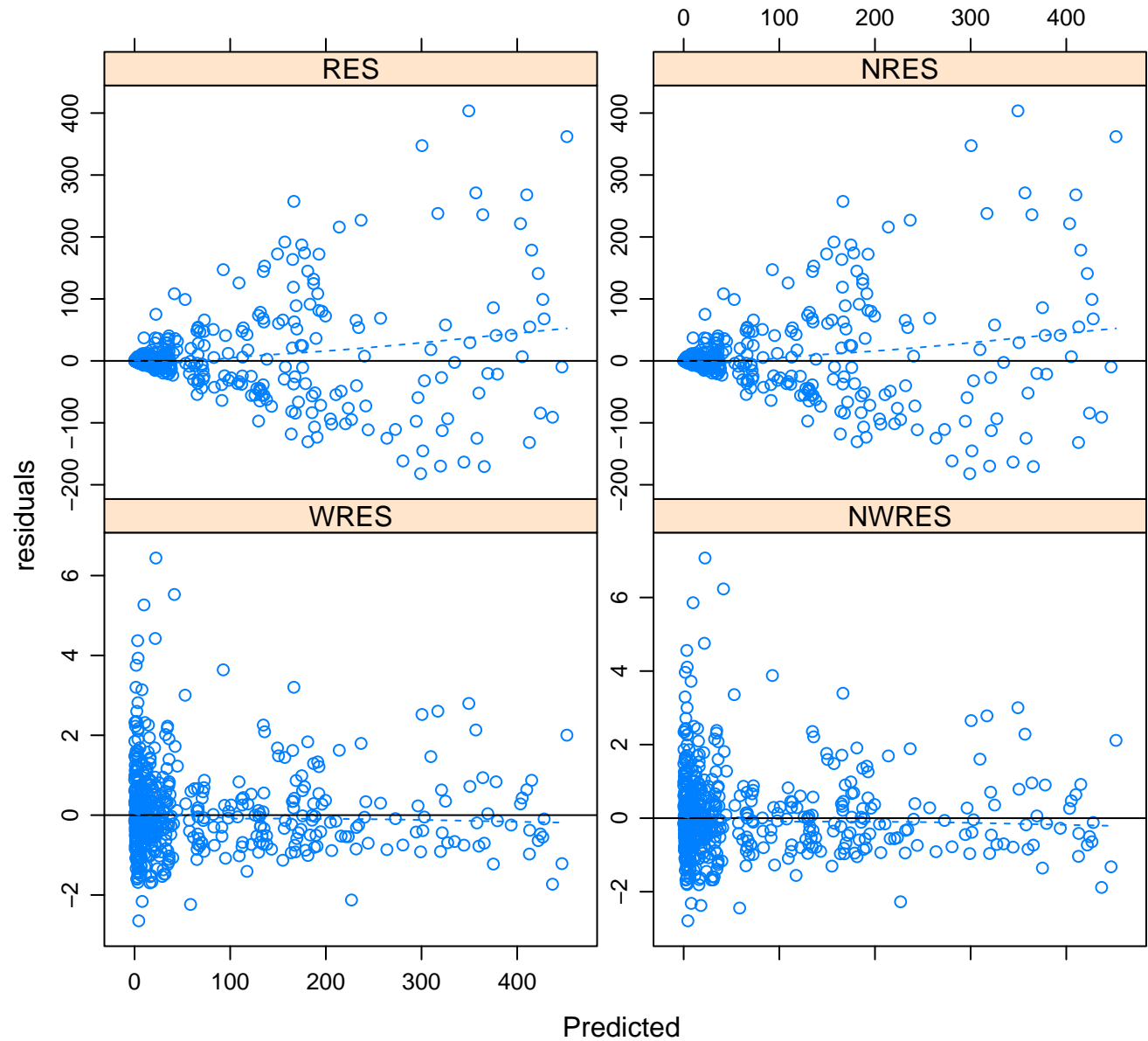
# Model 1006

## Observed vs. Predicted for all data



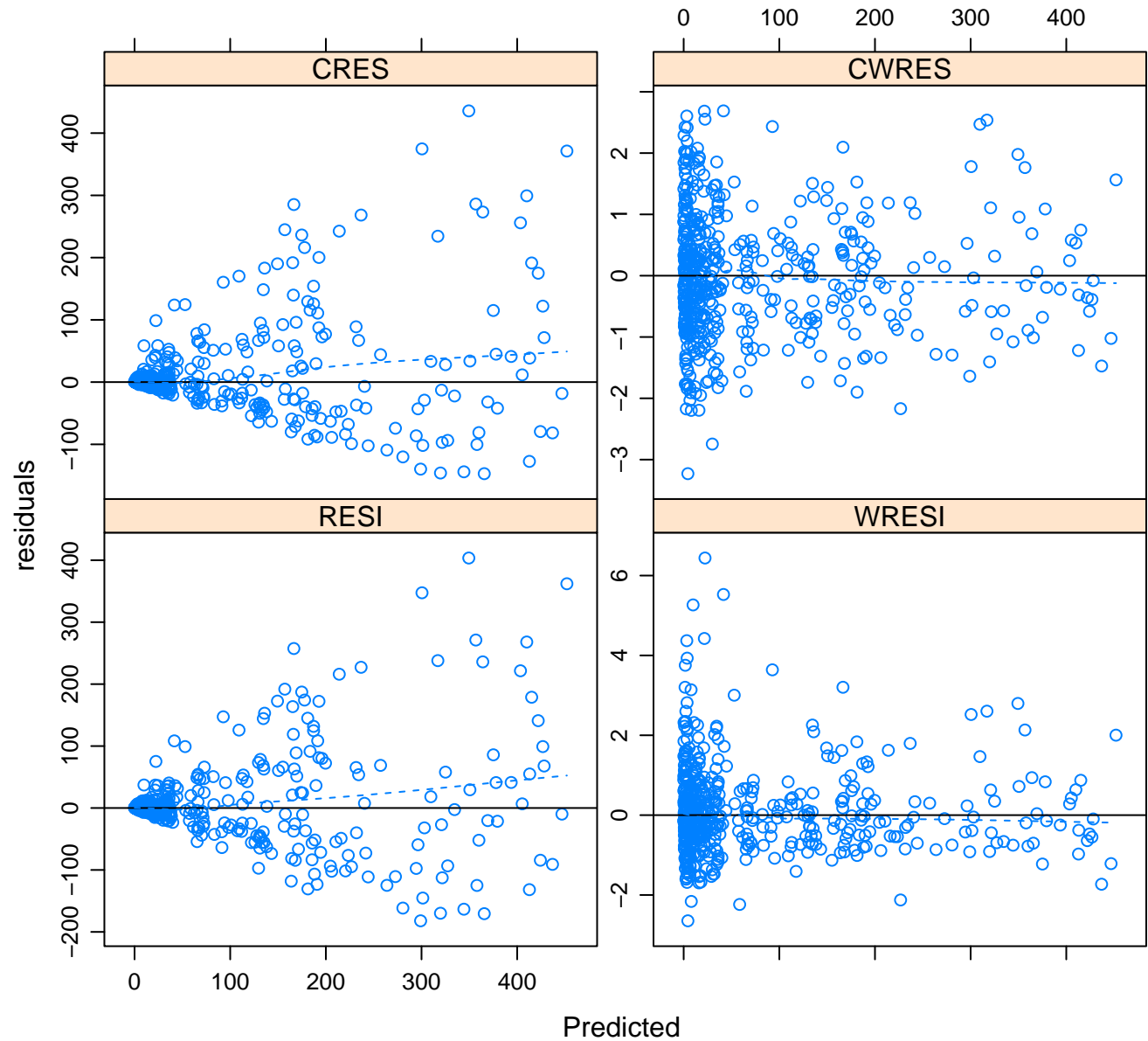
# Model 1006

## Residuals vs. Predicted for all data



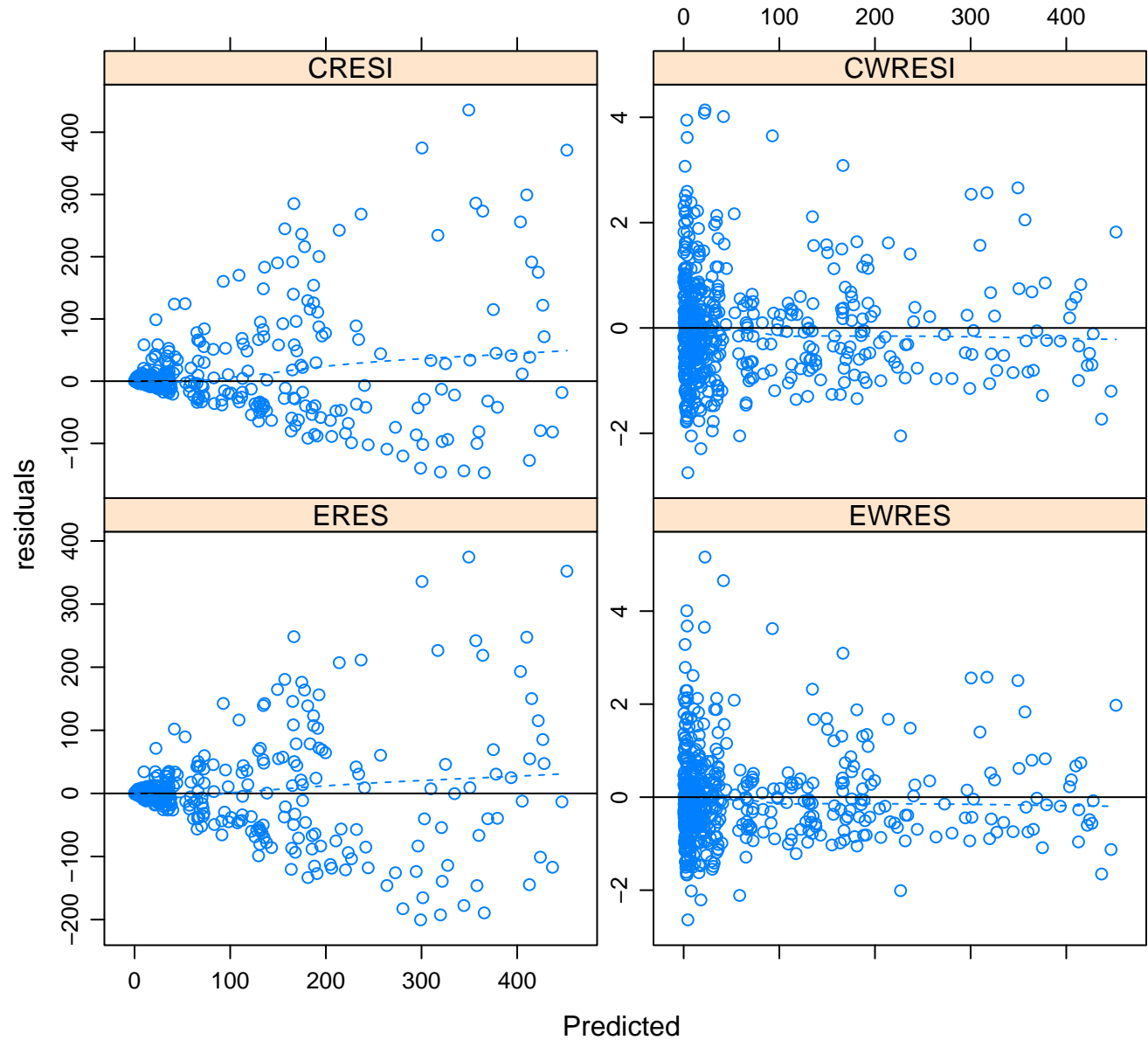
# Model 1006

## Residuals vs. Predicted for all data

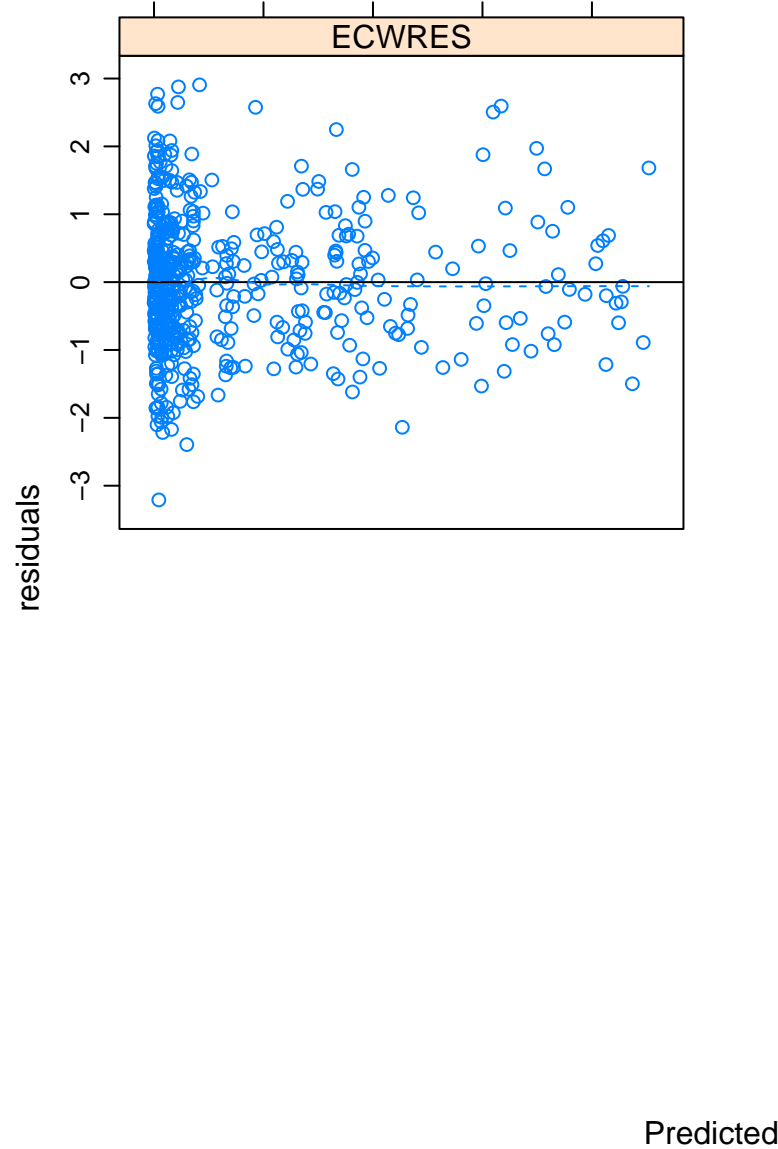


# Model 1006

## Residuals vs. Predicted for all data

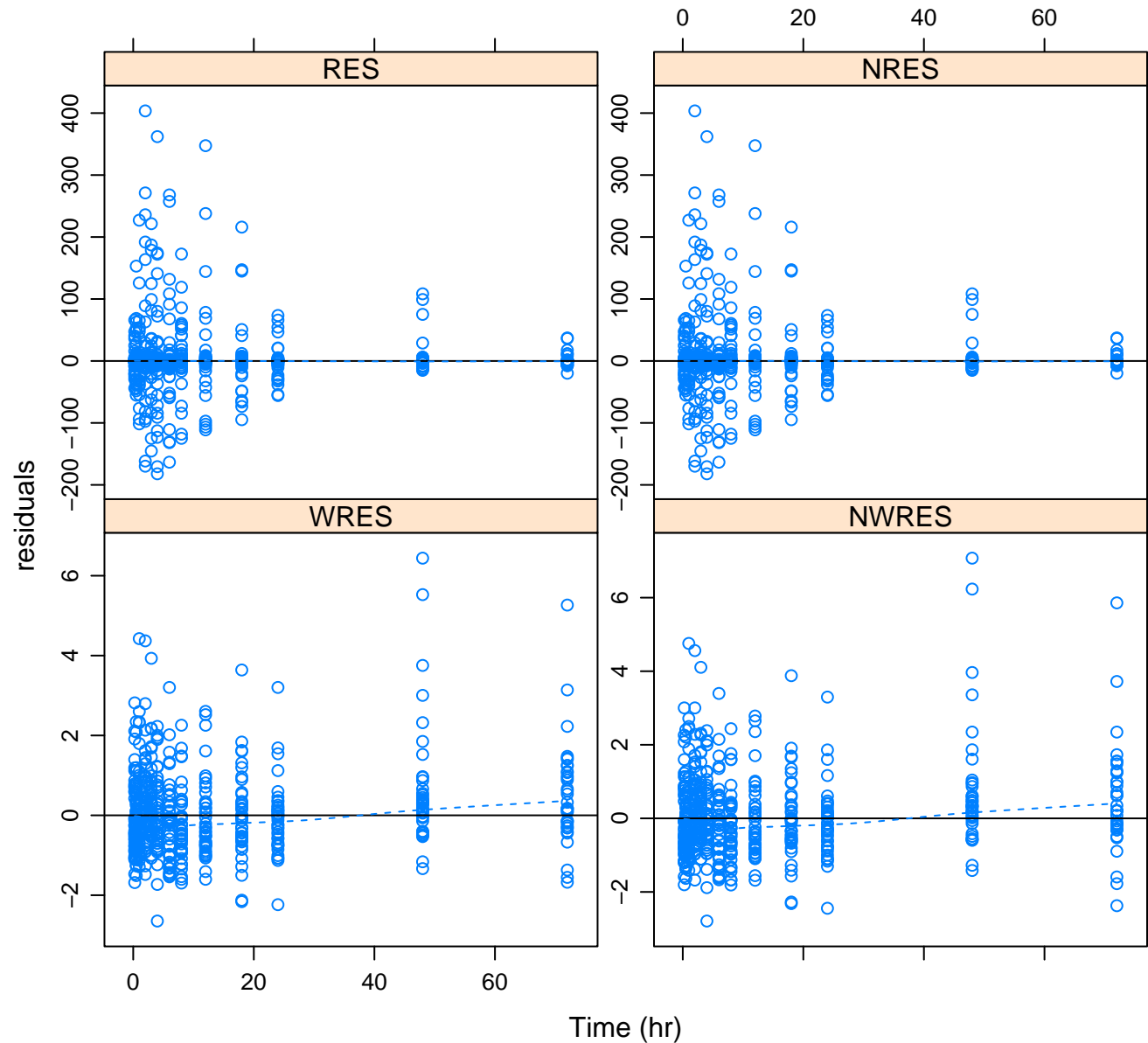


**Model 1006**  
**Residuals vs. Predicted for all data**



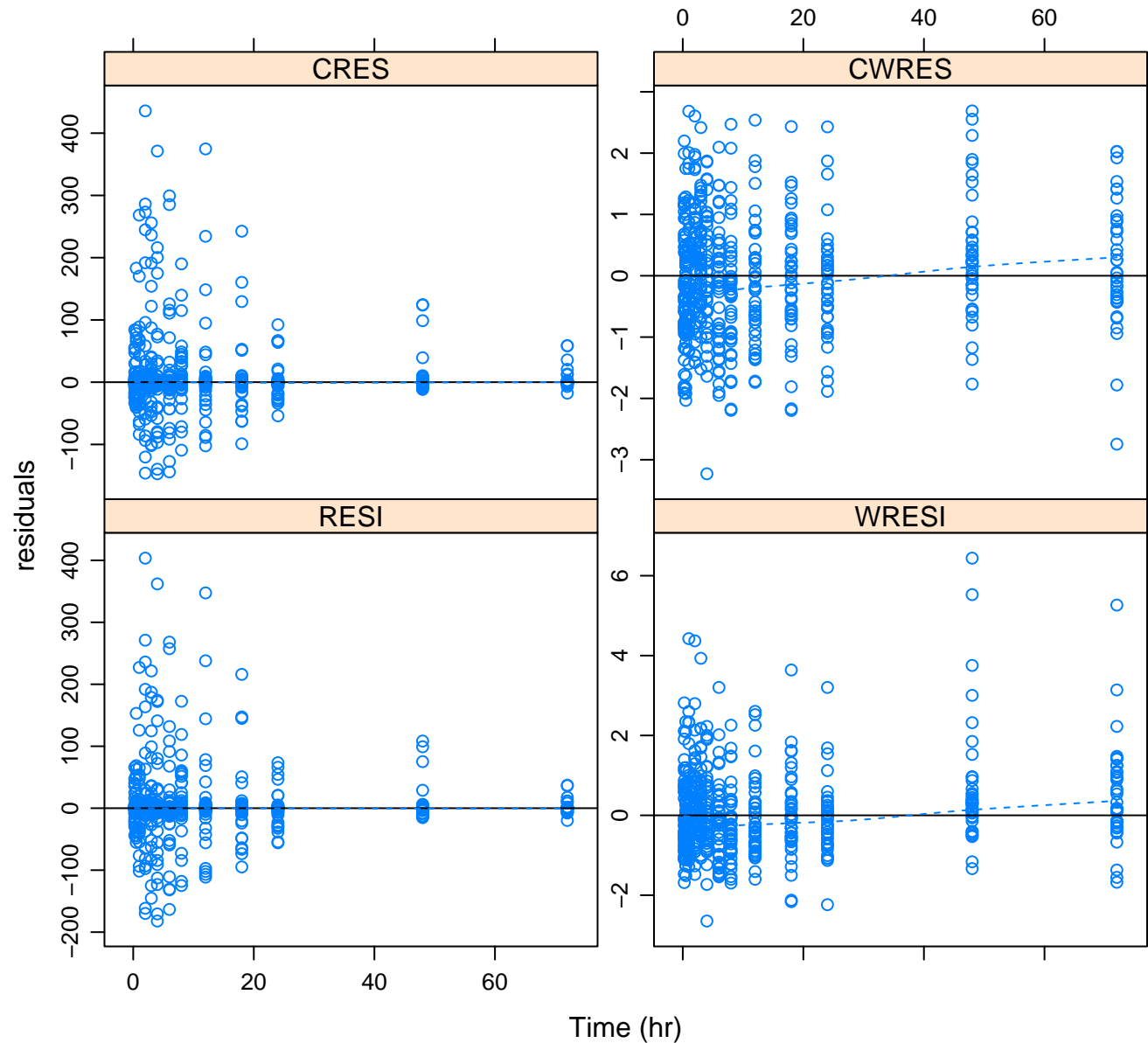
# Model 1006

## Residuals vs. Time for all data



# Model 1006

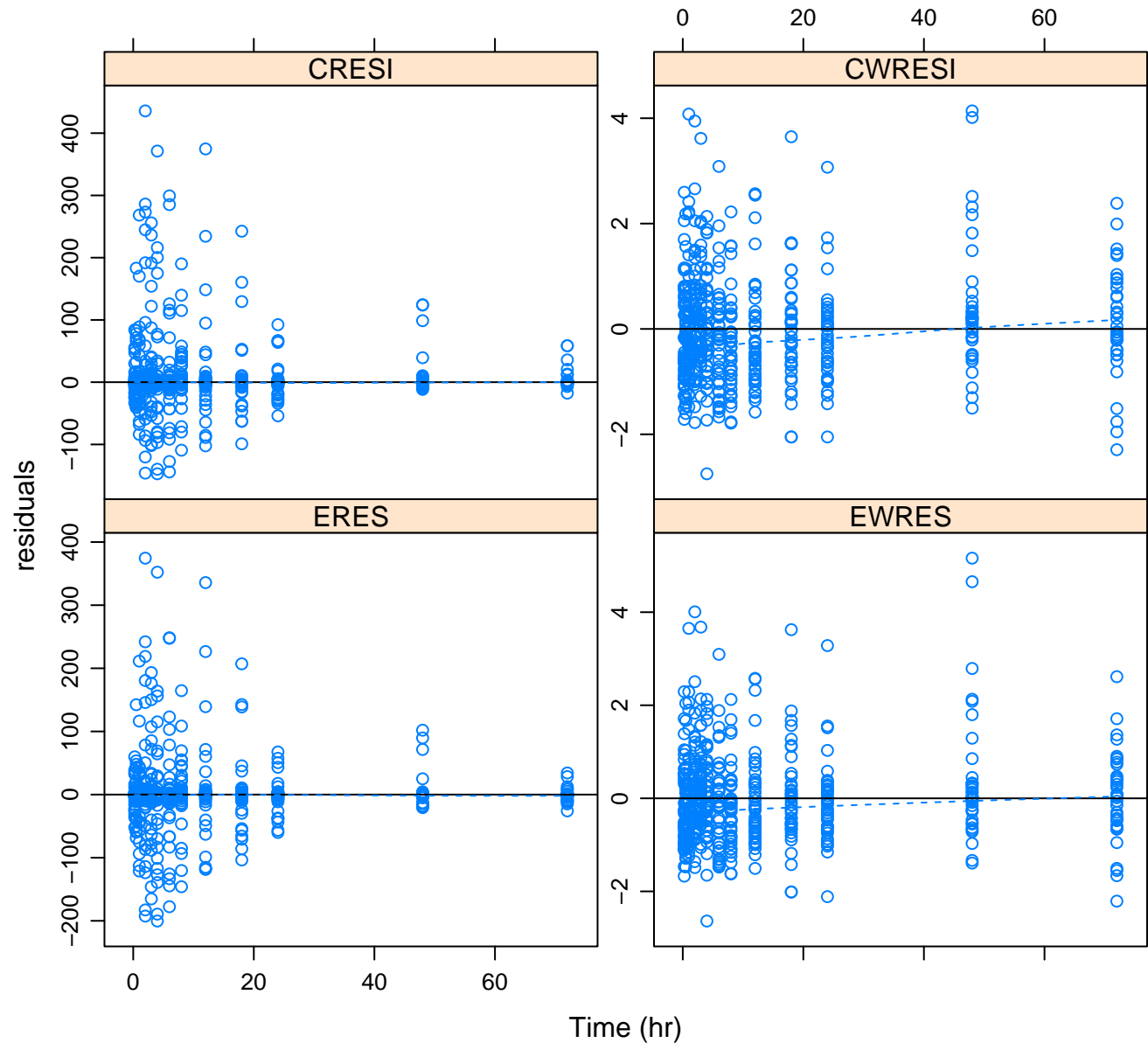
## Residuals vs. Time for all data





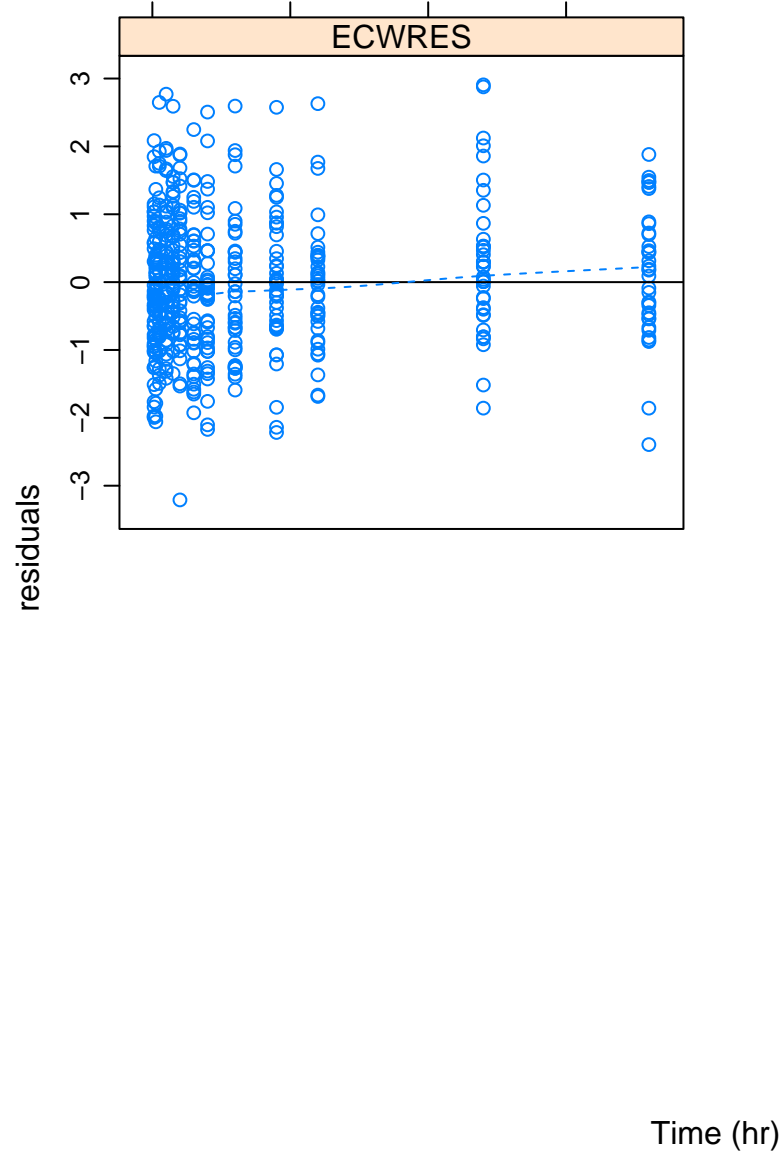
# Model 1006

## Residuals vs. Time for all data



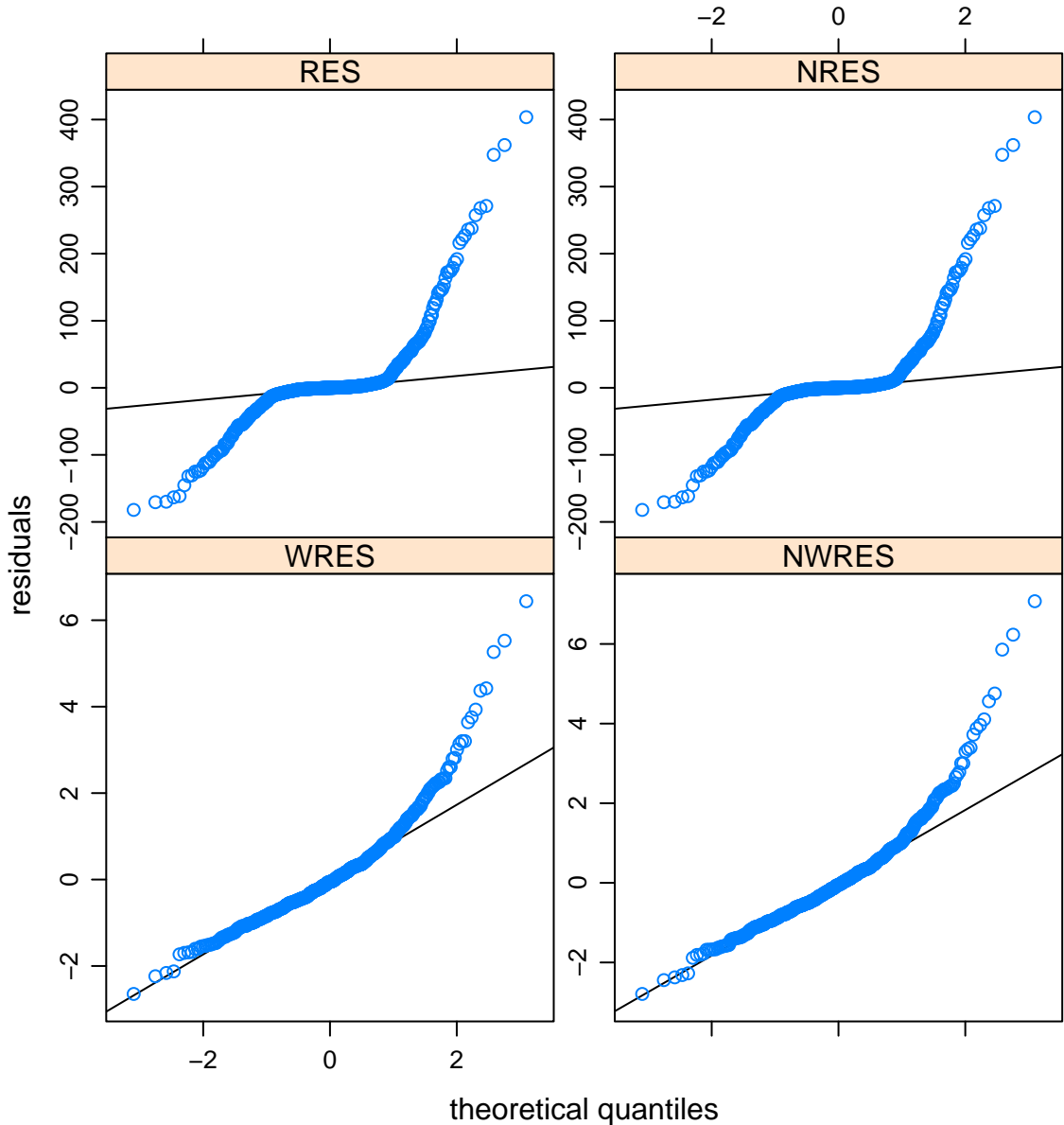
# Model 1006

## Residuals vs. Time for all data



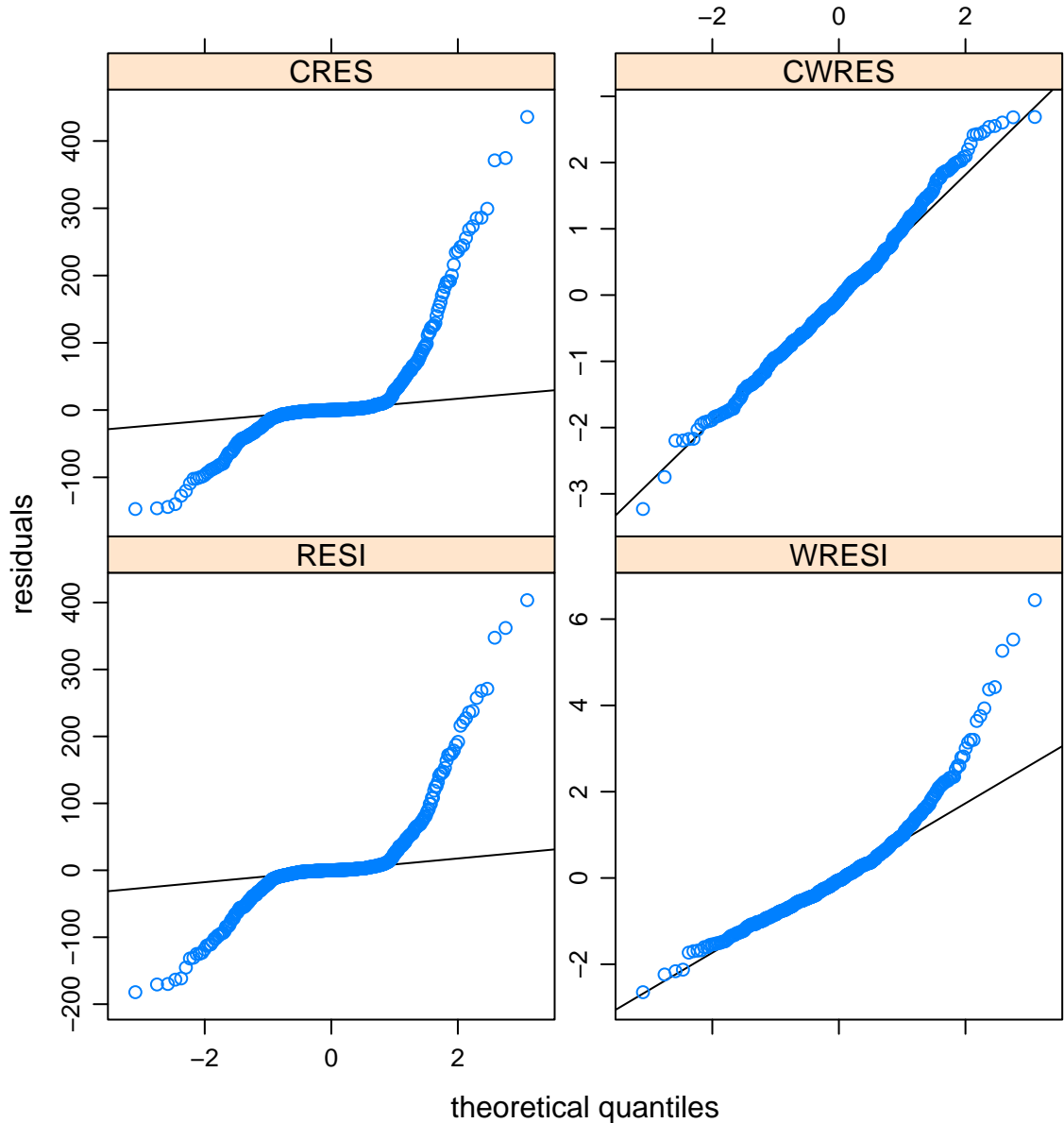
# Model 1006

## Normal Q-Q Plot Residuals for all data



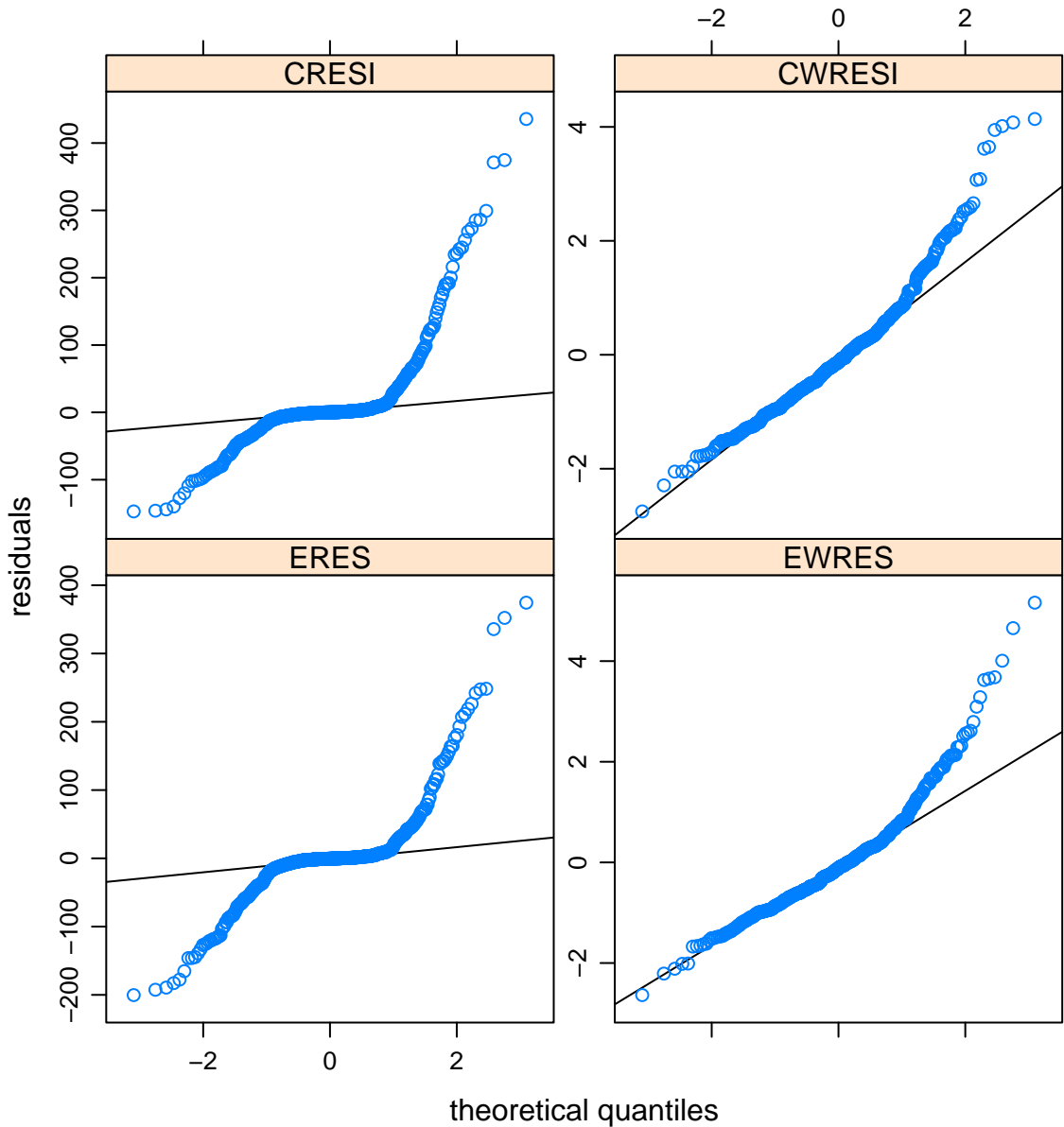
# Model 1006

## Normal Q-Q Plot Residuals for all data



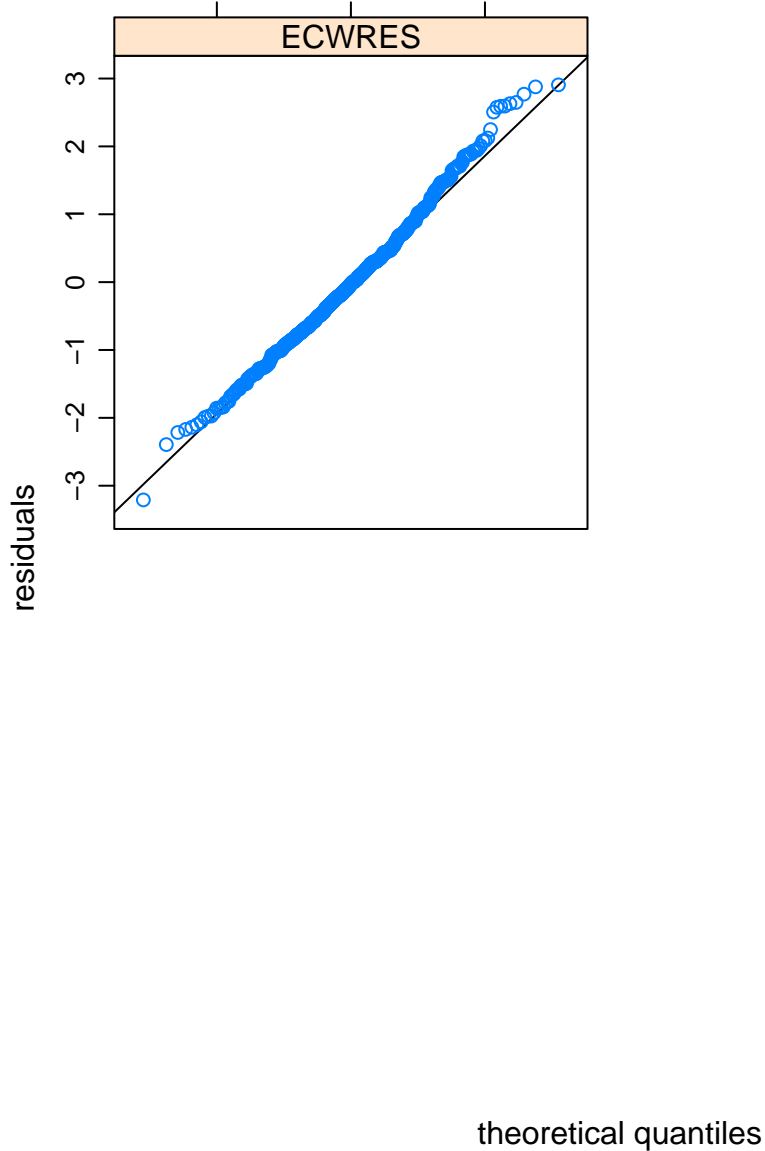
# Model 1006

## Normal Q-Q Plot Residuals for all data

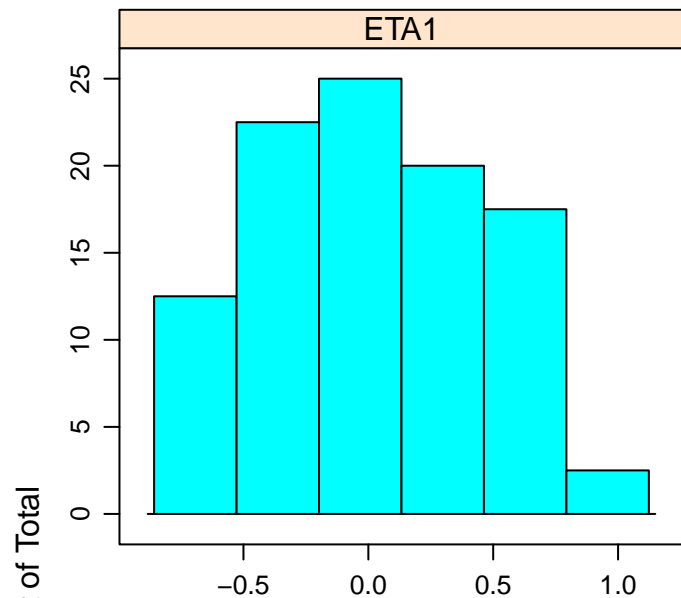


# Model 1006

## Normal Q-Q Plot Residuals for all data

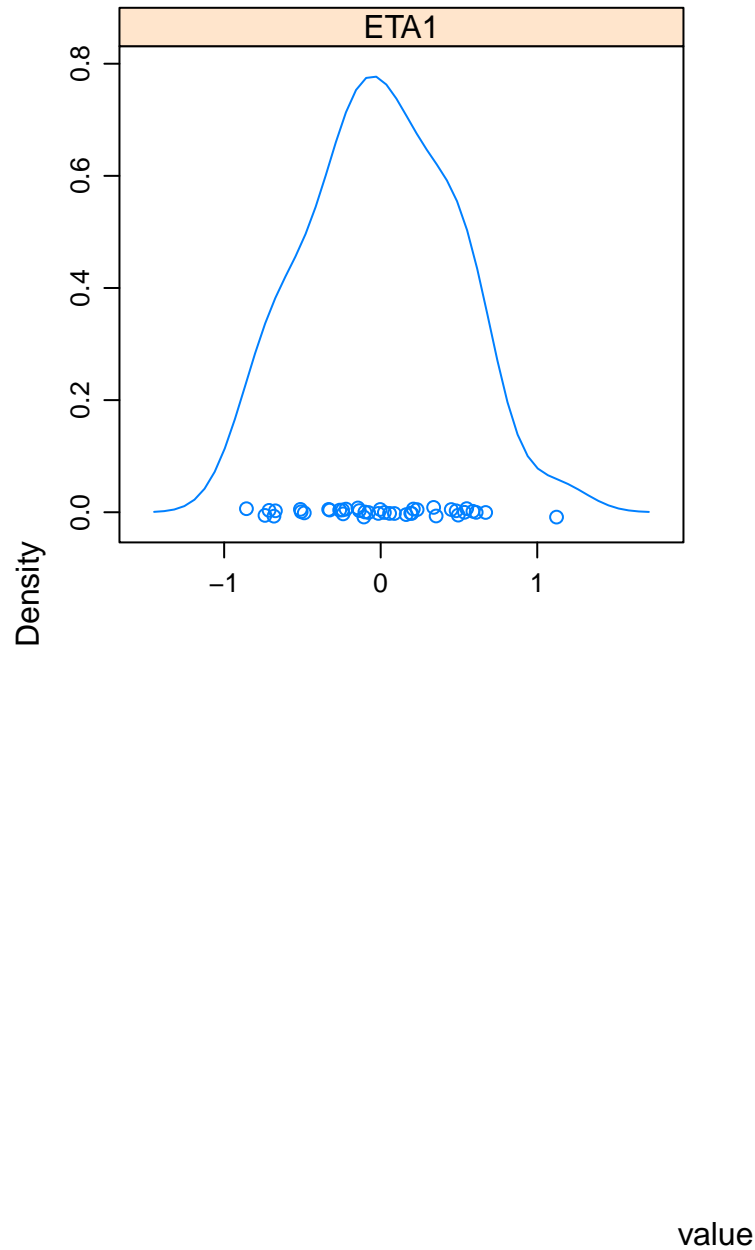


# Histograms of Etas



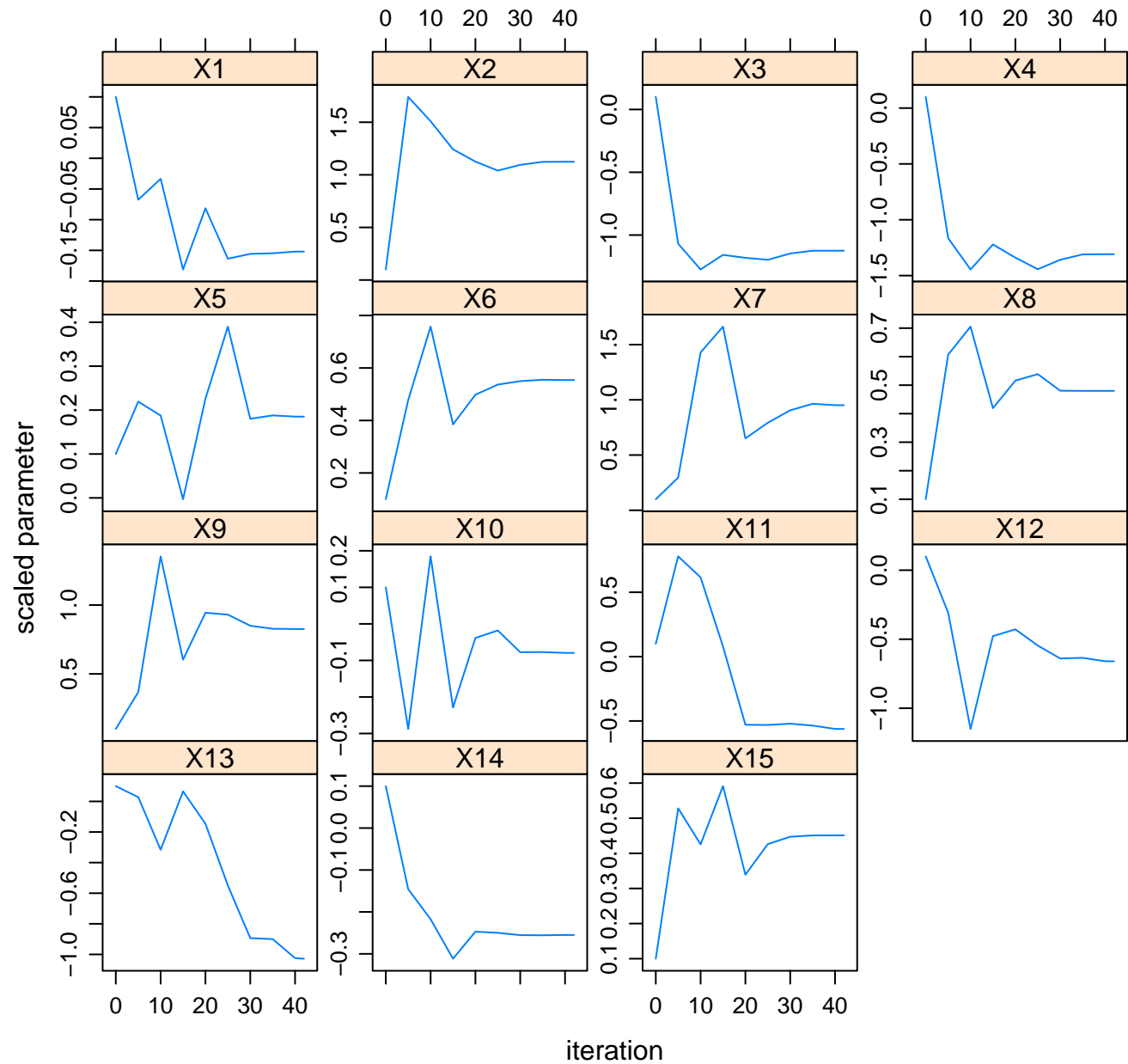
value

# Density of Etas





# Model 1006 parameter search



# Model 1006 gradient search

